

EPflex 



Products for Urology

Better ideas, better health.

We produce guidewires and stone retrieval devices for urological procedures in highest quality. With diverse design options, the products perfectly fit user preferences and the area of application.

In addition to a diverse standard portfolio, individually developed products can be realized upon customer request - from sampling to regulatory approval.

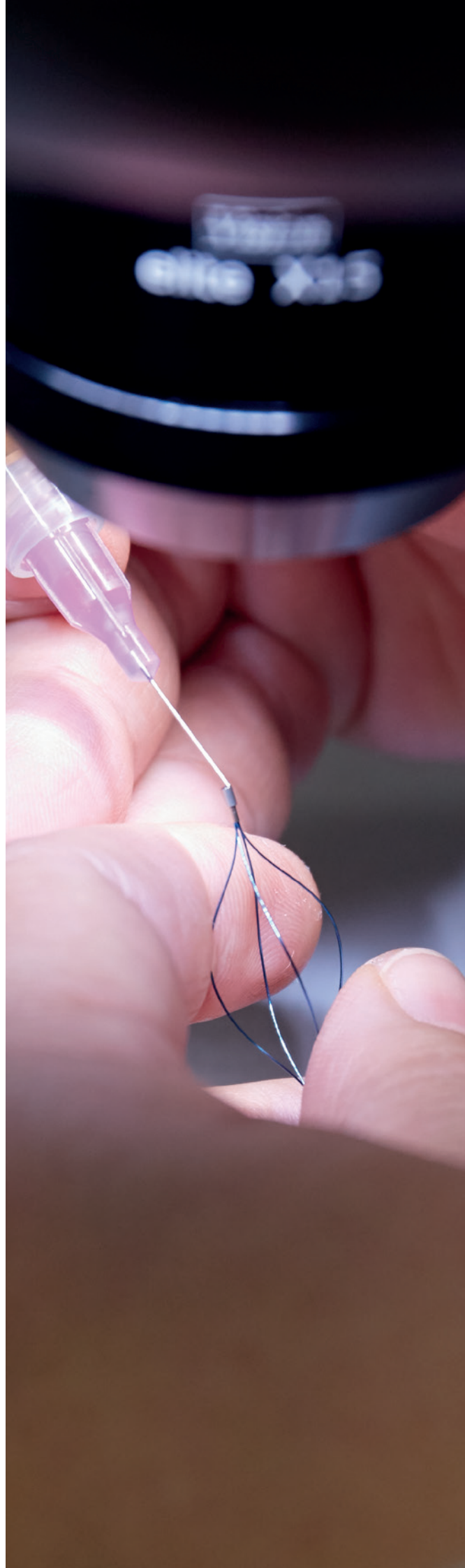
EPflex, a family business in its second generation, has now been successful on the market for more than 25 years as an innovation leader in the industry. Still growing, we have already hired more than 400 employees.

OUR SERVICES

- Sampling and series production
- Standard portfolio and collaborative product development
- Different packaging options (bulk/dispenser/sterile)
- Made in Germany
- **CE** certification for certain applications possible
- **DIN EN ISO 13485** certification

POSSIBLE APPLICATIONS

- Ureterorenoscopy (URS)
- Percutaneous nephrolithotomy (PCNL)



BASKET LINE

EPflex stone baskets are designed for minimally invasive stone extraction and feature highest quality. Made of Nitinol, these high-tech instruments are hand-formed to achieve excellent safety, kink resistance and catching performance.

TECHNICAL DETAILS

- With or without tip available
- Individual design: number of catching wires, diameter and length according to customer specification
- Pull wire and catching element made of Nitinol
- With EPflex system handle particularly ergonomic
- Customized handle design



STANDARD DIMENSIONS

Length	Form	Diameter
90 - 120 cm	with tip	2.5 - 4.5 Fr
120 cm	without tip	1.3 - 2.2 Fr



GRASPER LINE

Even hard-to-reach stones can be safely grabbed with the EPflex stone graspers. The open basket design allows frontal enclosure and following removal of stone fragments that are hard to reach.

TECHNICAL DETAILS

- Different types selectable: Thriller or i-grasper
- Individual design: diameter and length according to customer specification
- Pull wire and catching element made of Nitinol
- With EPflex system handle particularly ergonomic
- Customized handle design

STANDARD DIMENSIONS THRILLER

Length	Opening	Diameter
120 cm	8 mm / 11 mm	1.5 Fr
120 cm	8 mm / 11 mm	2.0 Fr



COMBI LINE

The EPflex premium guidewire for urological procedures combines the advantages of a hydrophilic tip with a PTFE-coated shaft and a Nitinol core wire - for best results and kink resistance even in challenging applications.

TECHNICAL DETAILS

- Straight or angled tip
- With spring or shrink tube on the shaft
- One or both sides flexible
- Nitinol core wire
- 5 cm hydrophilic soft tip
- Tungsten portion in the tip provides excellent X-ray visibility
- PTFE coating provides a smooth wire surface to ease advancement

STANDARD DIMENSIONS

Length	Diameter	Tip
150 cm	0.035"	5 cm



BASIC LINE

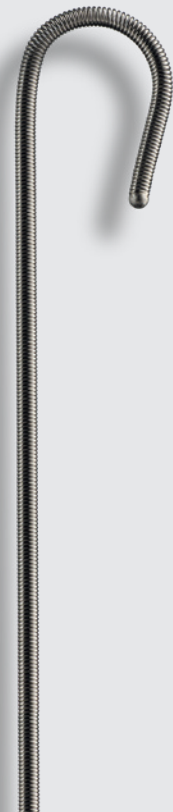
The EPflex Basic Line offers a choice of different stiffnesses and dimensional differences for an individual wire performance. Furthermore, the cost-efficient production makes the product attractive in pricing.

TECHNICAL DETAILS

- Straight or J-tip
- One or both sides flexible
- Stainless steel core wire
- PTFE coated or uncoated spring

STANDARD DIMENSIONS

Length	Diameter
100 - 150 cm	0.025" - 0.035"



MOVABLE LINE

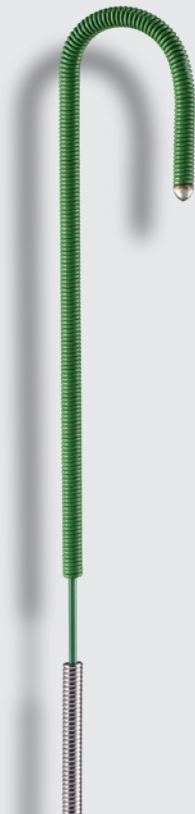
The Movable Line features a movable core wire that affects tip flexibility and shape by pulling back and forth. In addition, the wire tip can be guided by the movement of the core wire.

TECHNICAL DETAILS

- Straight or J-tip
- Movable core wire
- Handle part for ergonomic controlling
- PTFE coated core wire facilitates advancement

STANDARD DIMENSIONS

Length	Diameter
150 cm	0.025" - 0.035"



STRIPE LINE

The Stripe Line features a Nitinol core wire and therefore a very high kink resistance and flexibility. The two-colored PTFE tube also enables effective pushability and ideal visibility, which is particularly enhanced at the tip of the wire.

TECHNICAL DETAILS

- Straight or angled tip
- Two-color PTFE heat shrink tube (color choice according to customer specification)
- Nitinol core wire
- Tungsten or platinum spring for particularly good X-ray visibility at the wire tip

STANDARD DIMENSIONS

Length	Diameter
150 cm	0.035"



HYDRO LINE

A hydrophilic surface makes the Hydro Line especially lubricious after activation. The Nitinol core wire also ensures that the product is highly kink-resistant and flexible.

TECHNICAL DETAILS

- Straight or angled tip
- Nitinol core wire
- Regular or high stiffness
- Hydrophilic coating over complete length

STANDARD DIMENSIONS

Length	Diameter
150 cm	0.035"



MICRO LINE

The Micro Line for urological procedures features an extremely stiff shaft combined with a soft tip. This allows rigid devices to be guided particularly effectively to the intended location.

TECHNICAL DETAILS

- Straight or J-tip
- Stainless steel core wire for high stiffness („Lunderquist-design®“)
- 5 cm or 10 cm flexible tip
- PTFE coated or uncoated shaft

STANDARD DIMENSIONS

Length	Diameter
90 cm	0.035"







EPflex is one of the world's leading manufacturers of components for minimally invasive medicine.

We develop and produce guidewires and stone retrieval devices of the highest quality for various procedures – made in Germany.

With our innovative medical products, we push the boundaries of minimally invasive surgery every day. For patients, this means shorter procedures, less pain and faster recovery.

OUR MANUFACTURING TECHNOLOGIES

- Coating (PTFE, hydrophilic, ...)
- Electrochemical Marking
- Electropolishing
- Gluing
- Grinding
- Laser Marking
- Sandblasting
- Shrinking
- Turning & Milling
- Welding (Laser & Plasma)
- Wire Forming

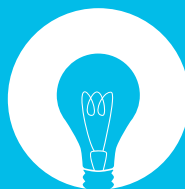
FURTHER BROSCHURES



GASTRO



PACKAGING



R&D



VASCULAR SURGERY

EPflex Feinwerktechnik GmbH
Im Schwöllbogen 24 · 72581 Dettingen/Erms · GERMANY
T +49 7123 9784-0 · epinfo@epflex.com · epflex.com



epflex.com/en/products/